

Proposed ADA Improvement Project
Oak Island, Brunswick County

Oak Island – Quantities:

R&R Curb Ramp	Each	
R&R Sidewalk	Square Yard	147 (31 incidental domes)
R&R Curb & Gutter	Linear Feet	
Retrofit Truncated Dome	Each	
Raised Truncated Dome	Each	37
New Curb Ramp	Each	
New Concrete Sidewalk	Square Yard	5
New Curb & Gutter	Linear Feet	
Demolish Sidewalk	Square Yard	10
Demolish Curb & Gutter	Linear Feet	
Demolish Curb Ramp	Each	

Proposed ADA Improvement Project
Oak Island, Brunswick County

Oak Island – W. Oak Island Dr./25th St.



Oak Island – W. Oak Island Dr./20th St.



X = Remove and replace existing sidewalk, add a raised truncated dome.

Proposed ADA Improvement Project
Oak Island, Brunswick County

Oak Island – W. Oak Island Dr./19th St.



Oak Island – W. Oak Island Dr./14th St.



X = Remove and replace existing sidewalk, add a raised truncated dome.

Proposed ADA Improvement Project
Oak Island, Brunswick County

Oak Island – W. Oak Island Dr./8th St.



Oak Island – W. Oak Island Dr./2nd St.



X = Remove and replace existing sidewalk, add a raised truncated dome.

Proposed ADA Improvement Project
Oak Island, Brunswick County

Oak Island – E. Oak Island Dr./7th St.



Oak Island – E. Oak Island Dr./13th St.



X = Remove and replace existing sidewalk, add a raised truncated dome.

Proposed ADA Improvement Project
Oak Island, Brunswick County

Oak Island – E. Oak Island Dr./14th St.



Oak Island – E. Oak Island Dr./19th St.



X = Remove and replace existing sidewalk, add a raised truncated dome.

Proposed ADA Improvement Project
Oak Island, Brunswick County

Oak Island – E. Oak Island Dr./22nd St.



Oak Island – E. Oak Island Dr./23rd St.



X = Remove and replace existing sidewalk, add a raised truncated dome.

Proposed ADA Improvement Project
Oak Island, Brunswick County

Oak Island – E. Oak Island Dr./29th St.



Oak Island – E. Oak Island Dr./35th St.



X = Remove and replace existing sidewalk, add a raised truncated dome.

Proposed ADA Improvement Project
Oak Island, Brunswick County

Oak Island – E. Oak Island Dr./36th St.



Oak Island – E. Oak Island Dr./40th St.



X = Remove and replace existing sidewalk, add a raised truncated dome. (See notes)

Proposed ADA Improvement Project
Oak Island, Brunswick County

Oak Island – E. Oak Island Dr./46th St.



Oak Island – E. Oak Island Dr./47th St.



X = Remove and replace existing sidewalk, add a raised truncated dome.

Proposed ADA Improvement Project
Oak Island, Brunswick County

Oak Island – E. Oak Island Dr./49th St.



Oak Island – E. Oak Island Dr./54th St.



X = Remove and replace existing sidewalk, add a raised truncated dome.

Proposed ADA Improvement Project
Oak Island, Brunswick County

Oak Island – E. Oak Island Dr./55th St.



Oak Island – E. Oak Island Dr./56th St.



X = Remove and replace existing sidewalk, add a raised truncated dome.
X = Install a raised truncated dome (Yellow).

Proposed ADA Improvement Project
Oak Island, Brunswick County

Oak Island – E. Oak Island Dr./57th St.



Oak Island – E. Oak Island Dr./61st St.

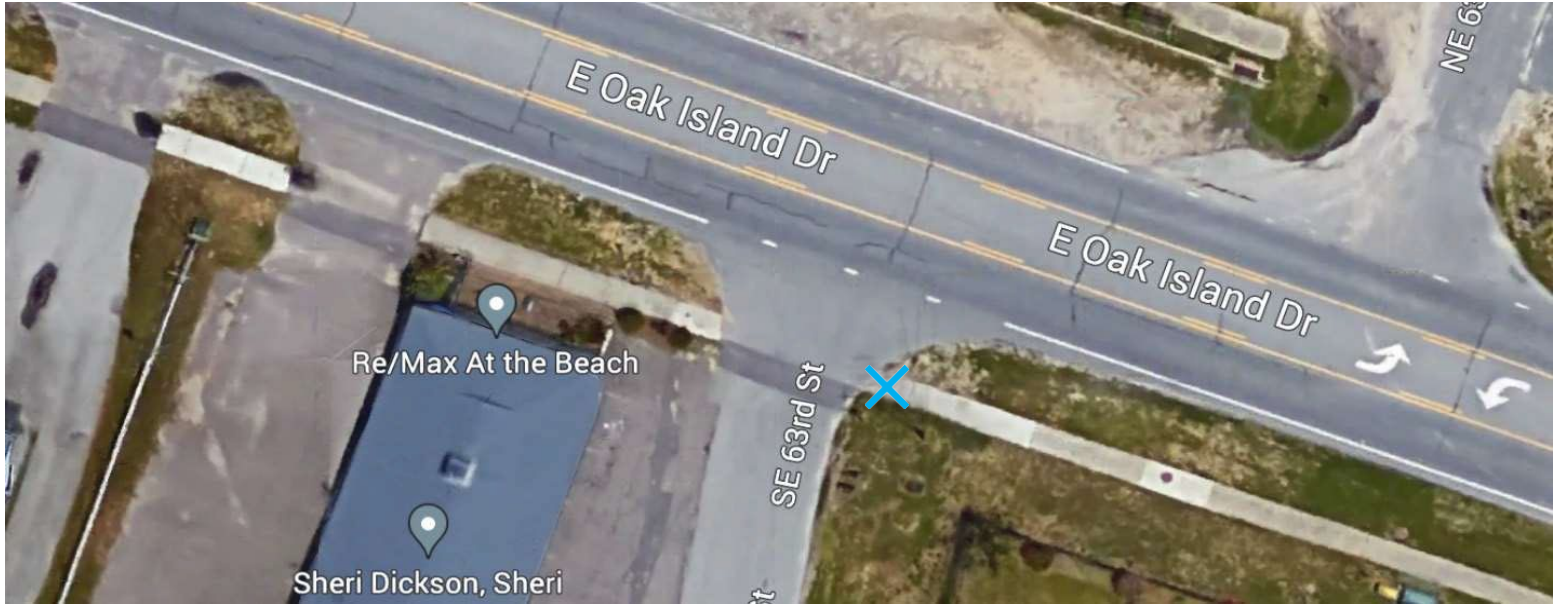


X = Remove and replace existing sidewalk, add a raised truncated dome. (See note)

X = Install a raised truncated dome (Yellow).

Proposed ADA Improvement Project
Oak Island, Brunswick County

Oak Island – E. Oak Island Dr./63rd St.



Oak Island – E. Oak Island Dr./63rd St.

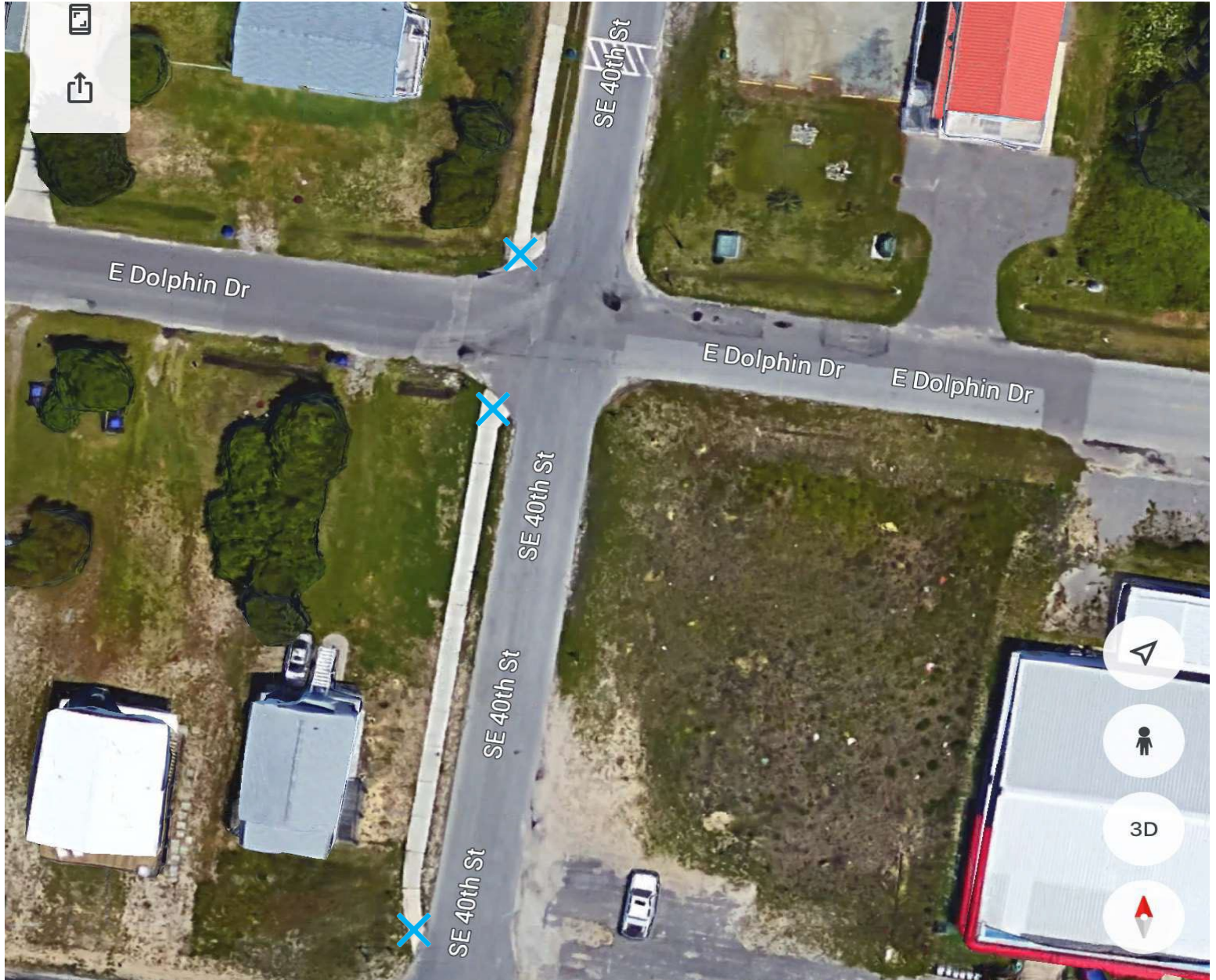


X = Remove and replace existing sidewalk, add a raised truncated dome.

X = Install a raised truncated dome (Yellow).

Proposed ADA Improvement Project
Oak Island, Brunswick County

Oak Island – E. Dolphin St./40th St.



X = Install a raised truncated dome (Yellow).

Proposed ADA Improvement Project
Oak Island, Brunswick County

Oak Island – E. Oak Island Dr./Crowell St.



Oak Island – E. Oak Island Dr./Sherrill St.



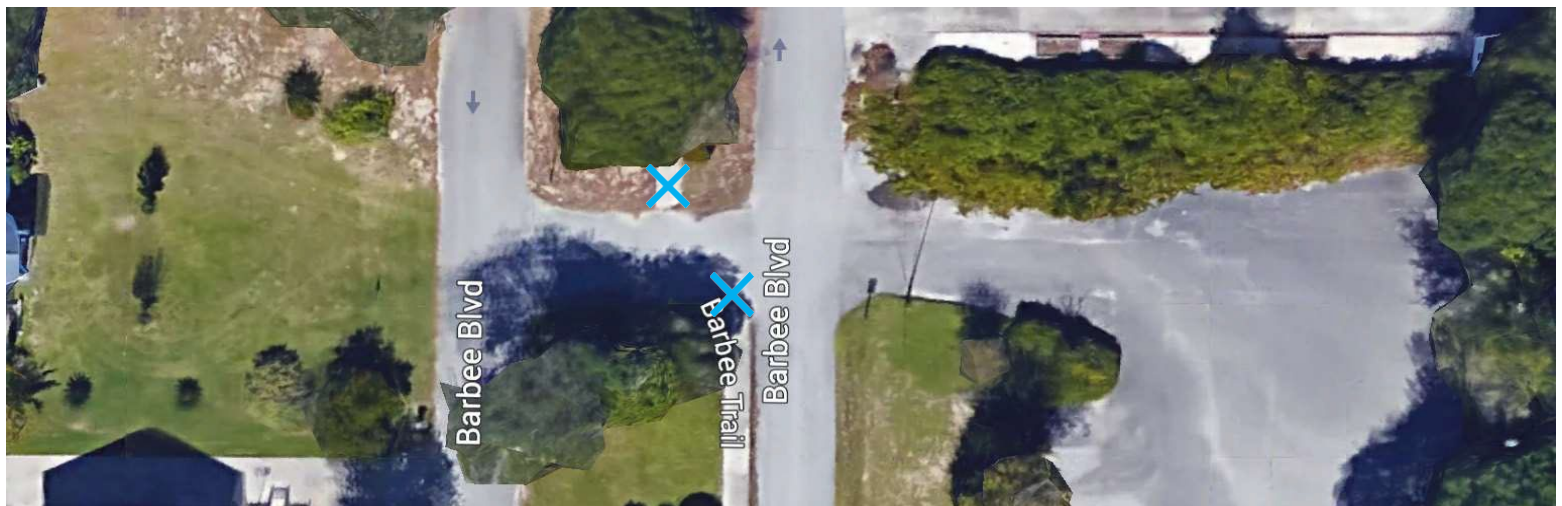
X = Install a raised truncated dome (Yellow).

Proposed ADA Improvement Project
Oak Island, Brunswick County

Oak Island – E. Oak Island Dr./Barbee Blvd.



Oak Island – Barbee Blvd./Library



X = Install a raised truncated dome (Yellow).

Proposed ADA Improvement Project
Oak Island, Brunswick County

Oak Island – Barbee Blvd./Elizabeth Dr.



Oak Island – Elizabeth Dr./Womble St.



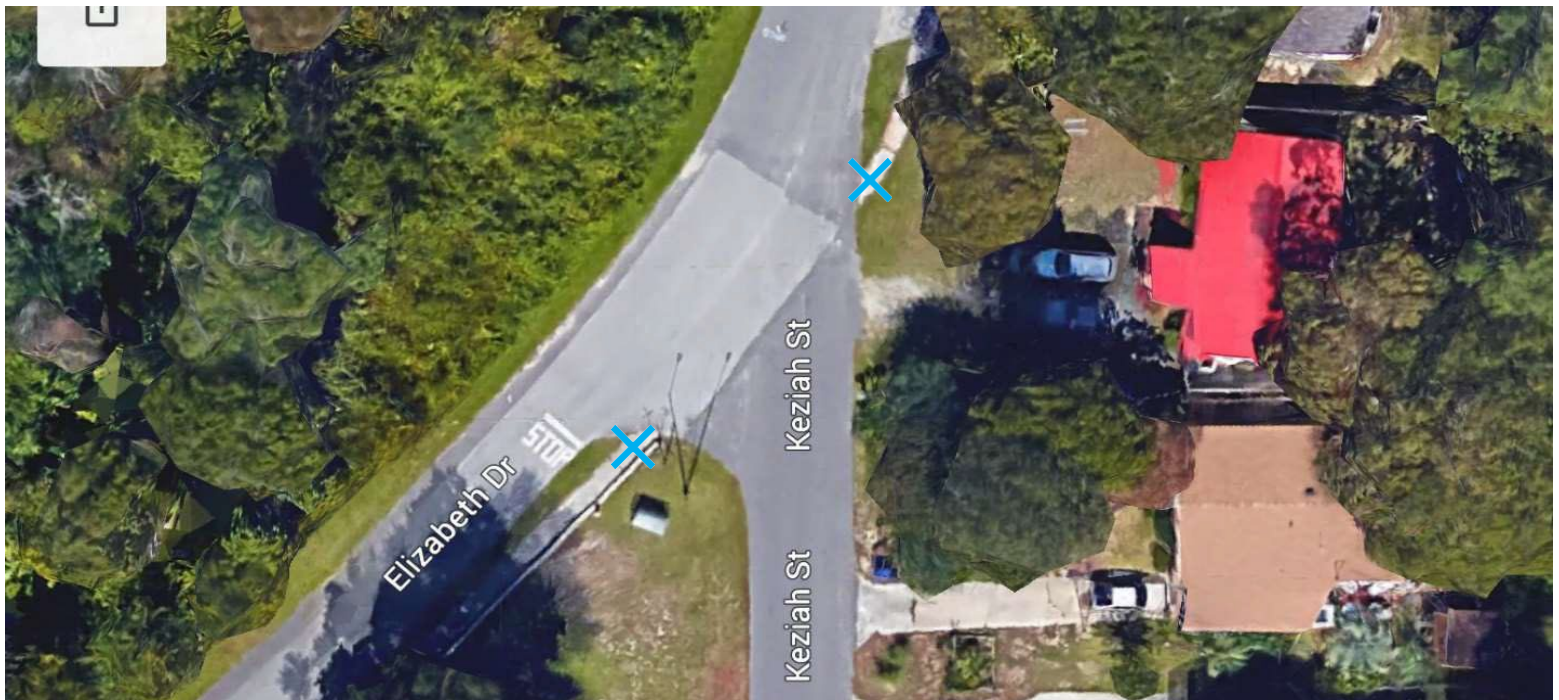
X = Install a raised truncated dome (Yellow).

Proposed ADA Improvement Project
Oak Island, Brunswick County

Oak Island – Womble St./Elizabeth Dr.



Oak Island – Elizabeth Dr./Keziah St.



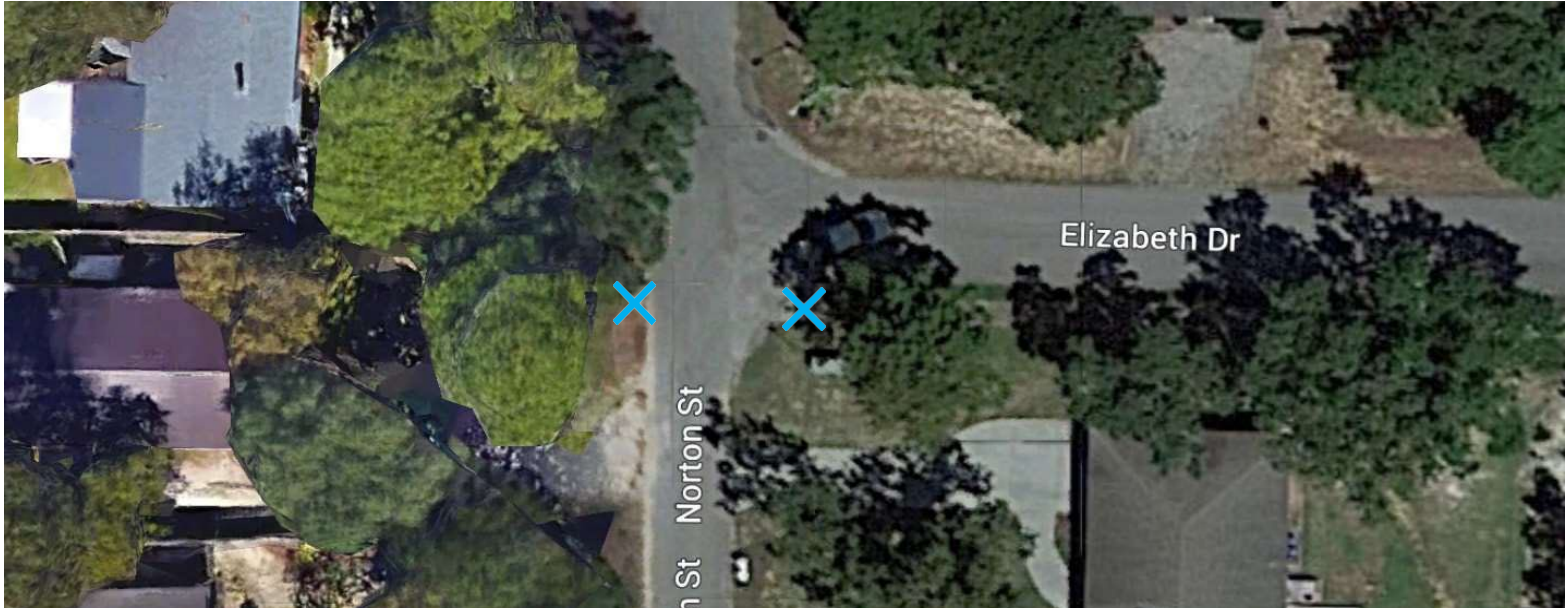
- X** = Remove and replace existing sidewalk, add a raised truncated dome. (See note)
X = Install a raised truncated dome (Yellow).

Proposed ADA Improvement Project
Oak Island, Brunswick County

Oak Island – Elizabeth Dr./Trott St.



Oak Island – Norton St./Elizabeth Dr.



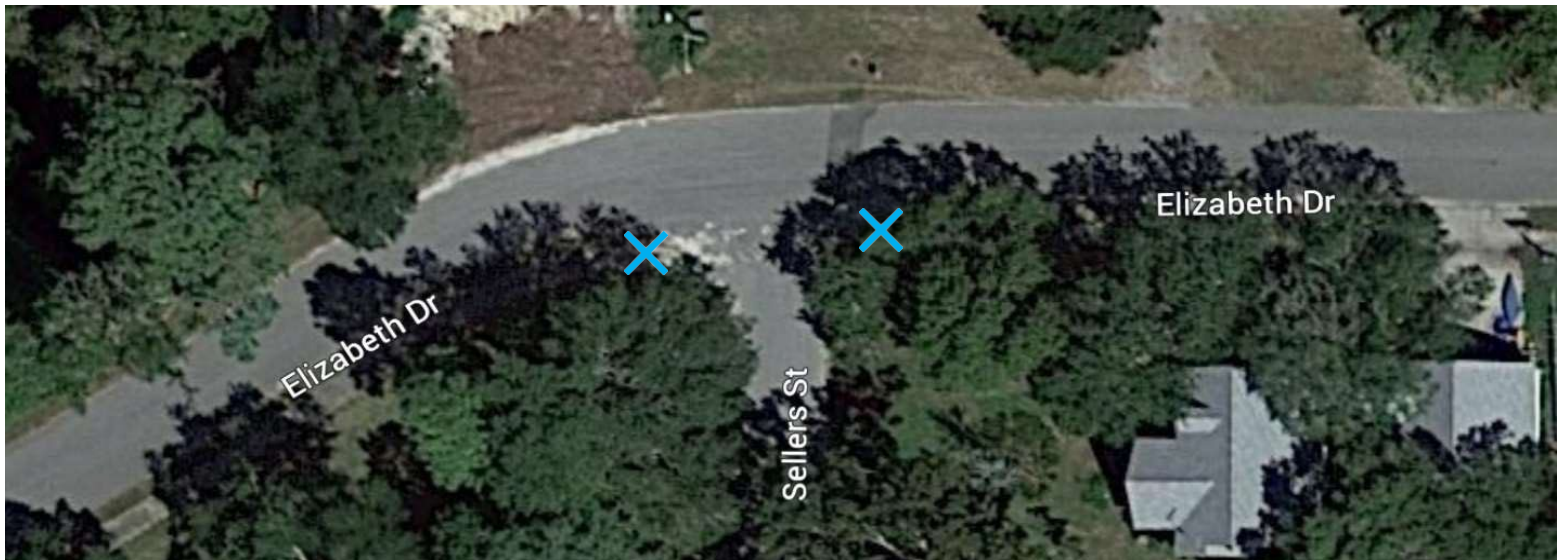
X = Install a raised truncated dome (Yellow).

Proposed ADA Improvement Project
Oak Island, Brunswick County

Oak Island – Elizabeth Dr./Mercer St.



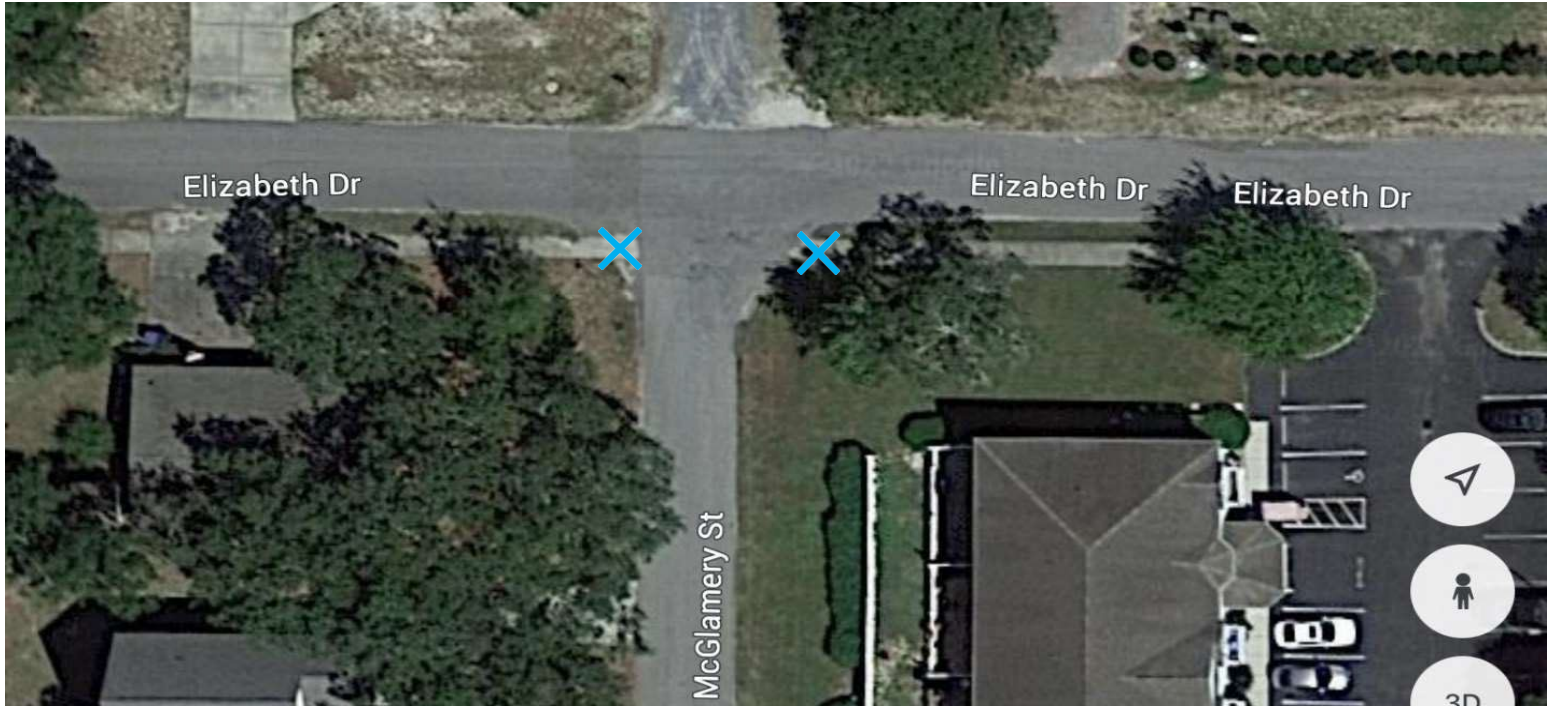
Oak Island – Elizabeth Dr./Sellers St.



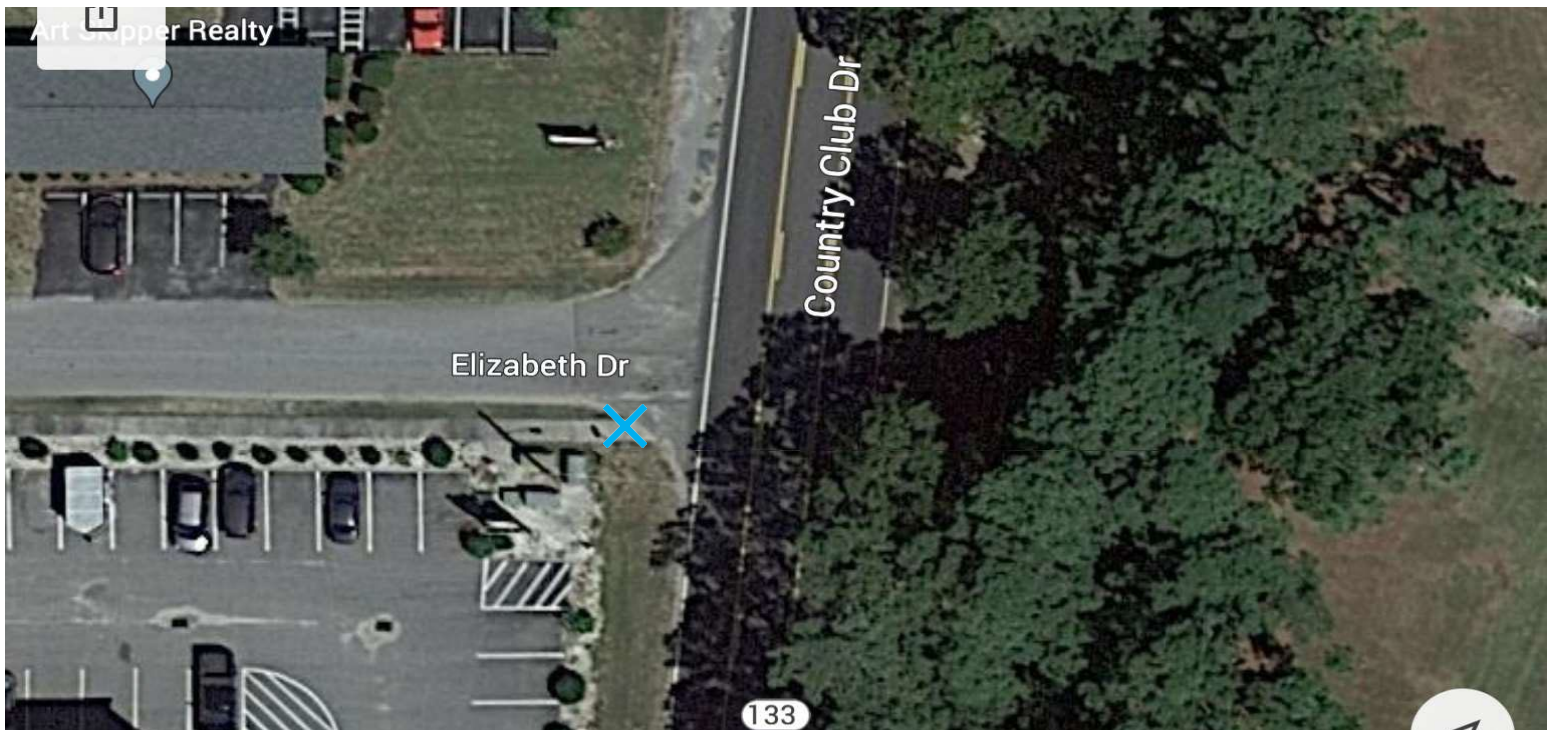
X = Install a raised truncated dome (Yellow).

Proposed ADA Improvement Project
Oak Island, Brunswick County

Oak Island – Elizabeth Dr./McGlamery St.



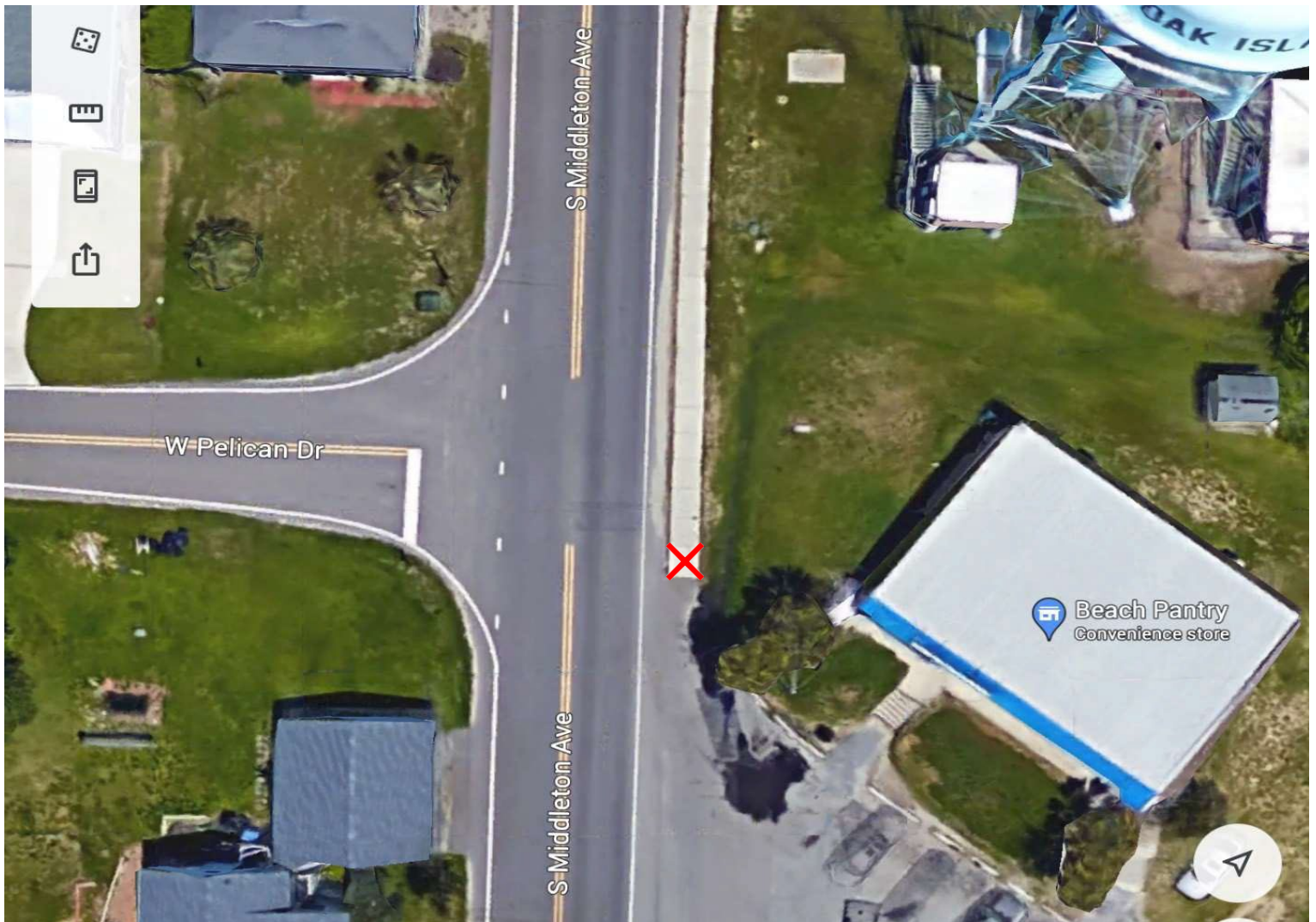
Oak Island – Elizabeth Dr./Country Club Dr.



X = Install a raised truncated dome (Yellow).

Proposed ADA Improvement Project
Oak Island, Brunswick County

Oak Island – S. Middleton Ave./W. Pelican Dr.



X = Remove and replace existing sidewalk, add a raised truncated dome.