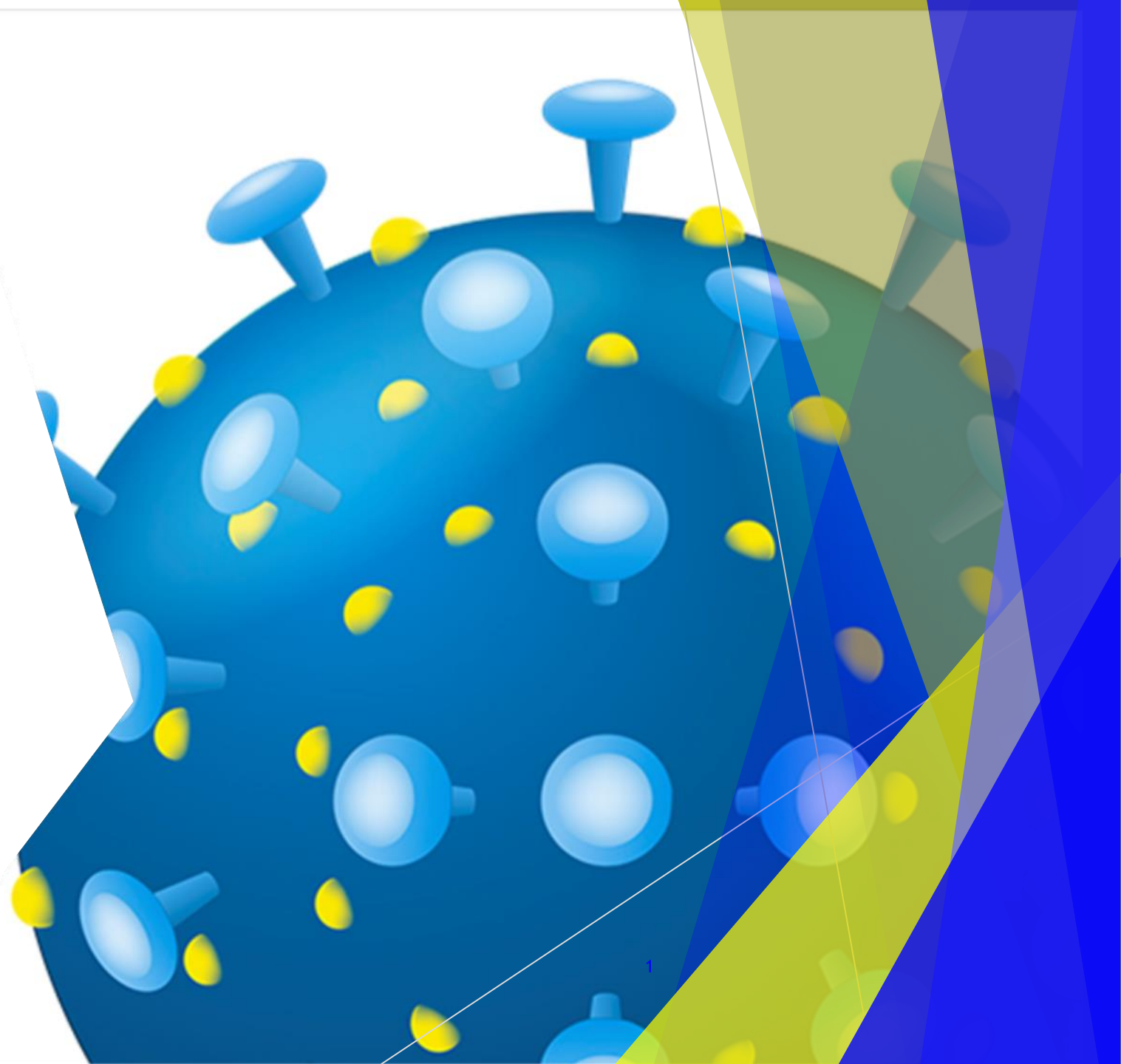


COVID-19 Partner Briefing

September 15, 2022

Brunswick County Health and Human Services



Recent Activities

Brunswick County is listed as a **low community risk level at this time**. Over the last month, an average of 238 cases per week were reported in Brunswick County. This data does not include home test kit results, so the actual cases are most likely higher. Overall statewide COVID-19 metrics are trending down from last month. CDC recommends individuals in communities with **low community risk levels** to:

- [Stay up to date](#) on vaccination, including recommended booster doses.
- Maintain [ventilation improvements](#).
- Avoid contact with people who have suspected or confirmed COVID-19.
- Follow recommendations for [isolation](#) if you have suspected or confirmed COVID-19.
- Follow the recommendations for [what to do if you are exposed](#) to someone with COVID-19.
- If you are at [high risk of getting very sick](#), talk with a healthcare provider about additional prevention actions.

In addition to the walk-in pop-up clinics below, Health Services is offering COVID-19 vaccines and boosters to eligible community members at our main clinic in Bolivia during regular business hours. To receive your vaccine or booster at our main clinic, you must schedule an appointment first. You can book appointments over the phone at 910.253.2339 or online at <http://ow.ly/M0K650KBCn7>

Brunswick County Health Services



Upcoming POP-UP COVID-19 VACCINE CLINICS

NO APPOINTMENTS NECESSARY / EVERYONE AGED 6 MONTHS+ ELIGIBLE

TOWN CREEK PARK COMMUNITY BUILDING WINNABOW, NC

**WEDNESDAY,
SEPTEMBER 7**

6420 Ocean Highway East
Winnabow, NC 28479

**WEDNESDAY,
SEPTEMBER 21**

START: 9:00 a.m.
END: 3:00 p.m.

INDIAN TRAIL MEETING HALL SOUTHPORT, NC

**THURSDAY,
SEPTEMBER 15**

113 W Moore Street
Southport, NC 28461

**WEDNESDAY,
SEPTEMBER 28**

START: 9:00 a.m.
END: 3:00 p.m.

Walk-in (Indoor Clinic)

Clinic staff will accommodate requests to vaccinate individuals from their vehicles for anyone who may have mobility issues or prefers not to enter the building for any reason.

What's Offered at this Clinic

- ✓ Pfizer-BioNTech, Moderna, J&J/Janssen, and Novavax Vaccines
- ✓ First & Second Doses* (Ages 6 months+)
- ✓ Third additional doses of the Pfizer-BioNTech and Moderna (mRNA) vaccines for the immunocompromised
- ✓ First Boosters** (Ages 5-11 years who have completed a primary series of Pfizer-BioNTech)
- ✓ Updated Boosters*** (Ages 12 years+)

*Those aged 6 months-17 years are eligible for the Moderna and Pfizer-BioNTech versions of the vaccine only.
**Those aged 5-11 years are eligible for the Pfizer-BioNTech version of the booster only.
***Those aged 12-17 years are eligible for the Pfizer-BioNTech version of the updated booster only. Those aged 18 years and older are eligible for the Moderna or Pfizer-BioNTech version of the updated booster.

Health Services requires written permission from a parent/legal guardian to administer vaccines to those aged 6 months-15 years and boosters to those aged 5-17 years. If someone else brings your child to these clinics, complete a consent form to send with them.

NC DATA

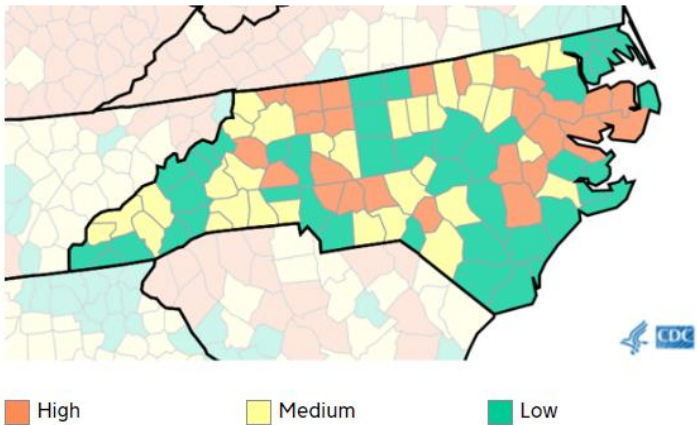
<https://covid19.ncdhhs.gov/dashboard>

CDC COVID-19 Community Levels by County

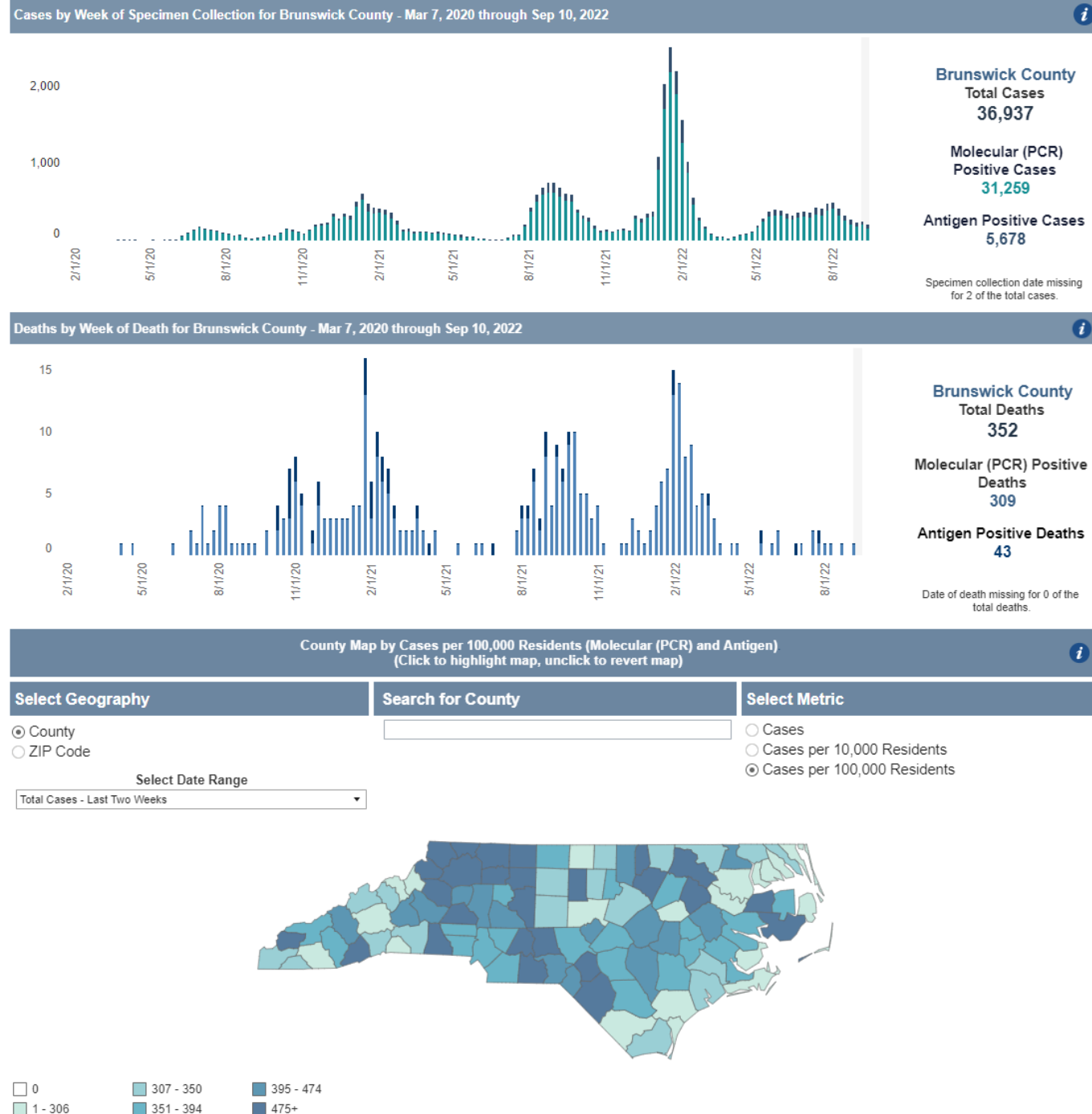
25/100 Previous Week 31/100

Counties with a high risk of illness and strain on the health care system

The Centers for Disease Control assign a community risk level for every county. [More info](#) or [find your county](#)



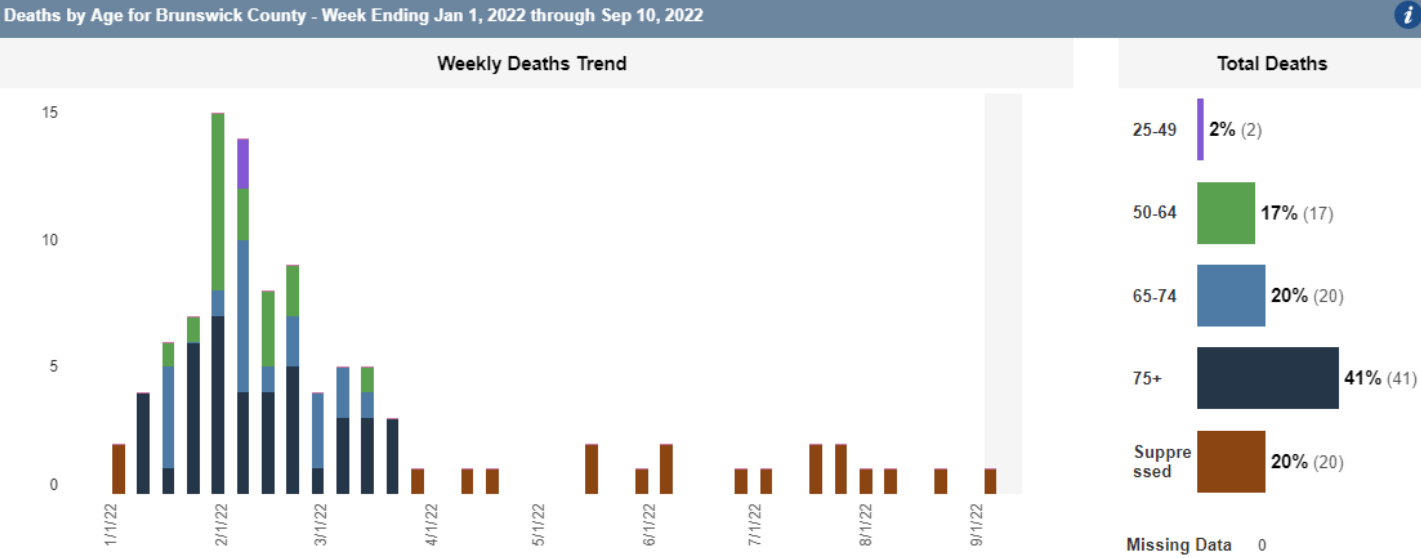
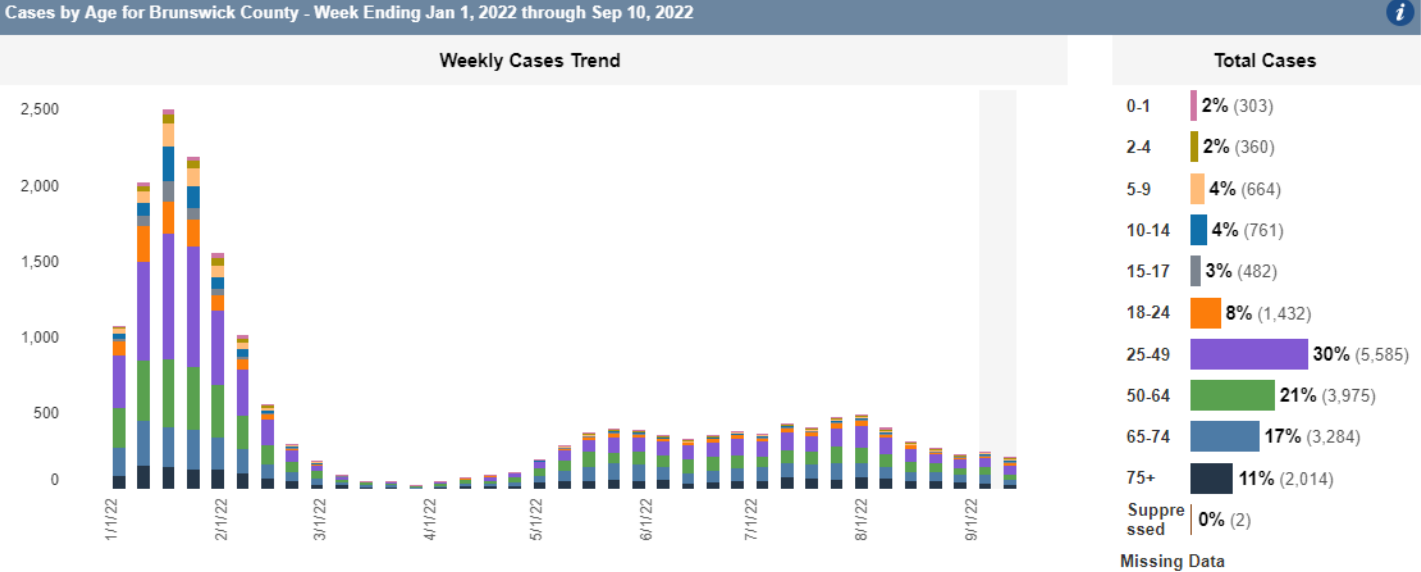
Case Count



► <https://covid19.ncdhhs.gov/dashboard/cases-and-deaths>

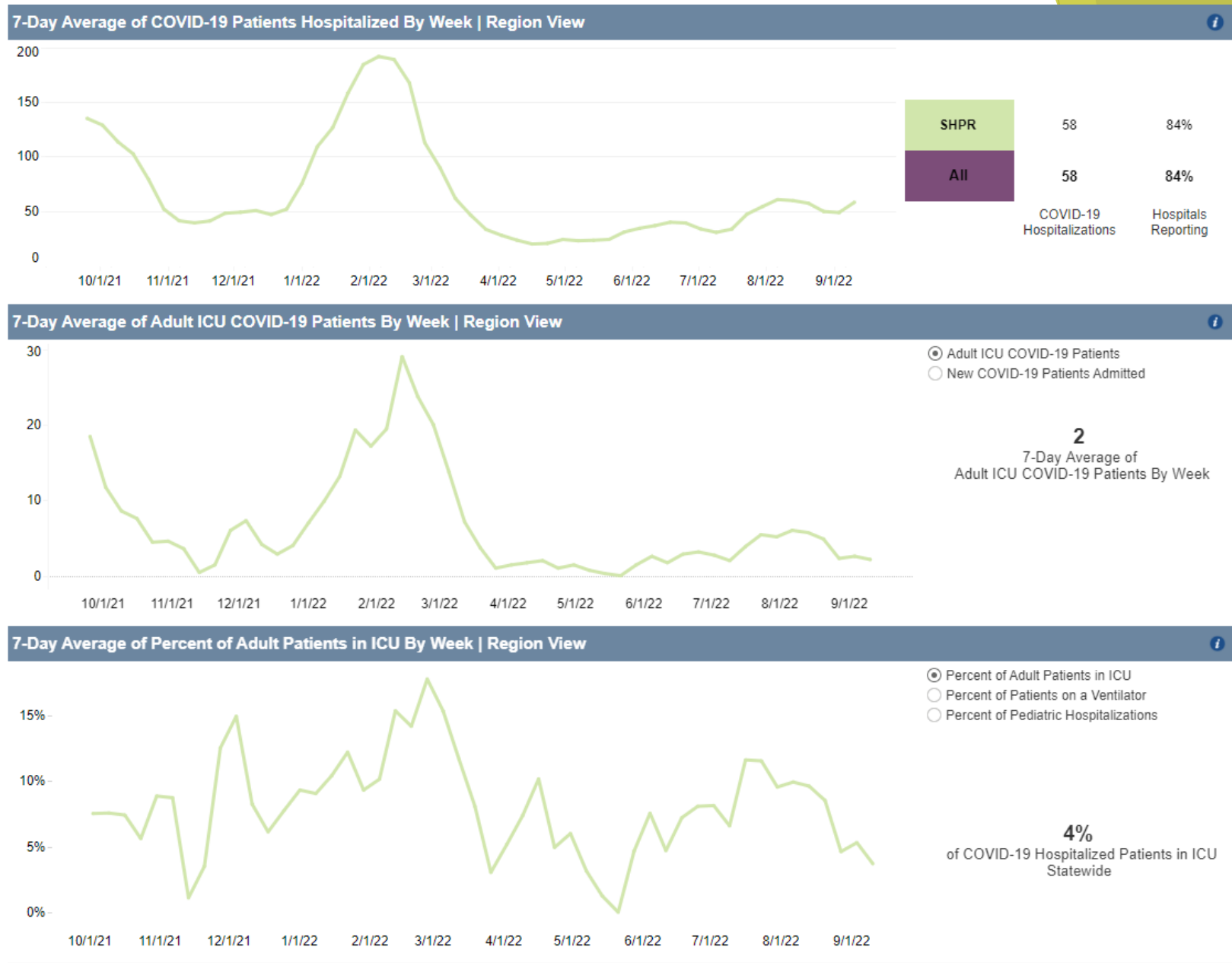
Brunswick County Case/Death Age Demographics

<https://covid19.ncdhhs.gov/dashboard/cases-demographics>



NC DATA

► <https://covid19.ncdhhs.gov/dashboard/hospitalizations>



Brunswick County Vaccine DATA

